


 critical level of effort Current Milestone	 % Complete Critical Remaining Work	Project: Ocean Park Water world Project, ID: OP-REM-CP-OPEN-6 Layout: OP work to comp 20200803 Page: 1 of 5	Ocean Park TAI SHUE WAN DEVELOPMENT Contract TSW-C006 Work to Completion affecting FSD OP		Date	Revision	Checked	Approved
					05-Aug-20	**DRAFT**		

ID	Activity	Duration	Start	Finish	Total Float	Activity % Complete	2020																												2021																							
							July	20	27	03	10	17	24	31	07	14	21	28	05	12	19	26	02	09	16	23	30	07	14	21	28	04	11																									
THF-1270	OS6: Install filtration pipe Install and Test	12	20-Jun-20 A	07-Jul-20 A		100%	Install filtration pipe Install and Test																																																			
THF-1310	OS6: Complete Slab	12	07-Jul-20 A	21-Jul-20 A		100%	OS6: Complete Slab																																																			
Concrete thoroughfare																																																										
Foundation: F1/F2 (Interface with P1 Flumes)																																																										
THF-1300	F1/F2: Complete Foundations (RFI 003457 -22kV Cables dash)	24	18-Jul-20 A	30-Jul-20 A		100%	F1/F2: Complete Foundations (RFI 003457 -22kV Cables dash)																																																			
Foundation: F3/F4 (Interface with P1 Flumes)																																																										
THF-1290	F3/F4: Complete Foundations (RFI 003539 -22kV Cables dash)	24	18-Jul-20 A	30-Jul-20 A		100%	F3/F4: Complete Foundations (RFI 003539 -22kV Cables dash)																																																			
Foundation: F5A/F6A (Interface with P1 Flumes)																																																										
THF-1280	F5A/F6A: Complete Foundations (RFI 003542 -Grade III Material not found)	24	18-Jul-20 A	30-Jul-20 A		100%	F5A/F6A: Complete Foundations (RFI 003542 -Grade III Material not found)																																																			
Foundation: F5/F6 (Interface with P1 Flumes)																																																										
THF-1180	F5/F6: Complete Foundations	24	18-Jul-20 A	30-Jul-20 A		100%	F5/F6: Complete Foundations																																																			
Foundation: F9/F10 (Interface with P2 Flumes)																																																										
THF-1240	F9/F10: Complete Foundations (RFI 003424 -Grade III Material not found) (RFI 003476 -F10 clash with C0	24	01-Jun-20 A	29-Jun-20 A		100%	F9/F10: Complete Foundations (RFI 003424 -Grade III Material not found) (RFI 003476 -F10 clash with C004 Buttr																																																			
THF-1350	F9/F10: Cure Strip scaffold	18	30-Jun-20 A	21-Jul-20 A		100%	F9/F10: Cure Strip scaffold																																																			
Foundation: F11/F12 (Interface with P2 Flumes)																																																										
THF-1250	F11/F12: Complete Foundations (RFI 003424 -Grade III Material not found) (RFI 003476 -F12 clash with C	24	01-Jun-20 A	29-Jun-20 A		100%	F11/F12: Complete Foundations (RFI 003424 -Grade III Material not found) (RFI 003476 -F12 clash with C004 Buttr																																																			
THF-1340	F11/F12: Cure Strip scaffold	18	30-Jun-20 A	21-Jul-20 A		100%	F11/F12: Cure Strip scaffold																																																			
Foundation: F13/F14 (Interface with P2 Flumes)																																																										
THF-1190	F13/F14: Complete Foundations	24	06-Apr-20 A	29-Apr-20 A		100%	F13/F14: Complete Foundations																																																			
Foundation: F15/F16 (Interface with P2 Flumes)																																																										
THF-1210	F15/F16: Complete Foundations (RFI 003460 -Founding material)	24	23-Apr-20 A	21-May-20 A		100%	F15/F16: Complete Foundations (RFI 003460 -Founding material)																																																			
Foundation: F17/F18 (Interface with P2 Flumes)																																																										
THF-1230	F17/F18: Complete Foundations (RFI 003504 -22KV cables dash)	24	11-May-20 A	06-Jun-20 A		100%	F17/F18: Complete Foundations (RFI 003504 -22KV cables dash)																																																			
Foundation: F19/F20 (Interface with P2 Flumes)																																																										
THF-1100	F19/F20: Complete Foundations (RFI 003548 -F20 Clash with ride footing)	18	26-Mar-20 A	20-Apr-20 A		100%	F19/F20: Complete Foundations (RFI 003548 -F20 Clash with ride footing)																																																			
Foundation: F21																																																										
THF-1140	F21: Complete Foundations	18	28-Mar-20 A	22-Apr-20 A		100%	F21: Complete Foundations																																																			
ABWF																																																										
THF-1320	Erect Handrails	48	22-Jul-20 A	24-Sep-20	25	20%	Erect Handrails																																																			
E&M																																																										
THF-1330	Thoroughfare Finishes E&M	24	28-Aug-20	24-Sep-20	25	0%	Thoroughfare Finishes E&M																																																			
SB5 Amendment																																																										
SF-1000	SB5 18th Amendment of site formation	0		29-Apr-20 A		100%																																																				
SF-1010	SB5 19th Amendment of site formation	0		12-Aug-20*	49	0%	SB5 19th Amendment of site formation																																																			
SF-1020	SB5 20th Amendment of site formation	0		12-Sep-20*	137	0%	SB5 20th Amendment of site formation																																																			
Site Formation of slopes																																																										
A1200	Soil Nail Heads strengthening and shotcrete PMI (19th Amendment)	36	13-Aug-20	23-Sep-20	49	0%	Soil Nail Heads strengthening and shotcrete PMI (19th Amendment)																																																			
P1-P2 Slope Formation																																																										
SF-P4P5-1050	P1 -P2 Mass fill (15th amendment)	36	31-Jul-20	10-Sep-20	60	0%	P1 -P2 Mass fill (15th amendment)																																																			
P3 Slope Formation																																																										
SF-P4P5-1060	P3 Mass fill (15th amendment)	30	13-Oct-20	17-Nov-20	5	0%	P3 Mass fill (15th amendment)																																																			
P4 P5 Slope Formation																																																										
SF-P4P5-1010	S200 Install Soil Nails 3 layers (30)	28	31-Jul-20	01-Sep-20	68	0%	S200 Install Soil Nails 3 layers (30)																																																			
SF-P4P5-1000	S200 Amendment submission	0	31-Jul-20*	31-Jul-20	68	0%	S200 Amendment submission																																																			
SF-P4P5-1040	P4 P5 Mass fill (15th amendment)	24	13-Oct-20	10-Nov-20	2	0%	P4 P5 Mass fill (15th amendment)																																																			
SF-P4P5-1020	Site Formation under Crane Platform	12	28-Oct-20	11-Nov-20	11	0%	Site Formation under Crane Platform																																																			
SF-P4P5-1070	P5 Boomerango Mass Fill	12	10-Nov-20	23-Nov-20	0	0%	P5 Boomerango Mass Fill																																																			
SF-P4P5-1030	P4 P5 As Built	6	11-Nov-20	18-Nov-20	11	0%	P4 P5 As Built																																																			
TC-1 Removal																																																										
TC-1000	Removal of TC-1	18	06-Jun-20 A	29-Jun-20 A		100%	Removal of TC-1																																																			
TC-1030	Deploy 250 Ton Mobile Crane with Fly Jib	0		06-Jun-20 A		100%	Deploy 250 Ton Mobile Crane with Fly Jib																																																			
TC-1010	Complete drainage work in EVA area	12	30-Jun-20 A	14-Jul-20 A		100%	Complete drainage work in EVA area																																																			
TC-1020	Make good EVA road	10	15-Jul-20 A	25-Jul-20 A		100%	Make good EVA road																																																			
P5 Ride																																																										
P5 Boomerango																																																										
FL-P51010	Boomerango PMI 505	0		31-Dec-19 A		100%																																																				
FL-P51000	Boomerango frame Fabrication	70	03-Feb-20 A	28-Apr-20 A		100%	Boomerango frame Fabrication																																																			
FL-P51020	Boomerango frame Delivery	10	29-Apr-20 A	15-May-20 A		100%	Boomerango frame Delivery																																																			
FL-P51040	Boomerango frame Erection	28	16-May-20 A	17-Jun-20 A		100%	Boomerango frame Erection																																																			
FL-P51070	Boomerango complete Flumes	18	18-Jun-20 A	22-Aug-20	52	0%	Boomerango complete Flumes																																																			
FL-P51080	Boomerango Flumes T&C	18	07-Dec-20	29-Dec-20	2	0%	Boomerango Flumes T&C																																																			
P5 Conveyor																																																										
FL-P51030	P5 Install Conveyor	20	22-Jun-20 A	13-Oct-20	11	75%	P5 Install Conveyor																																																			
P5 Flume																																																										
FL-P51050	P5 Deliver Remaining Flume Components	0		20-Jun-20 A		100%	Flume Components																																																			

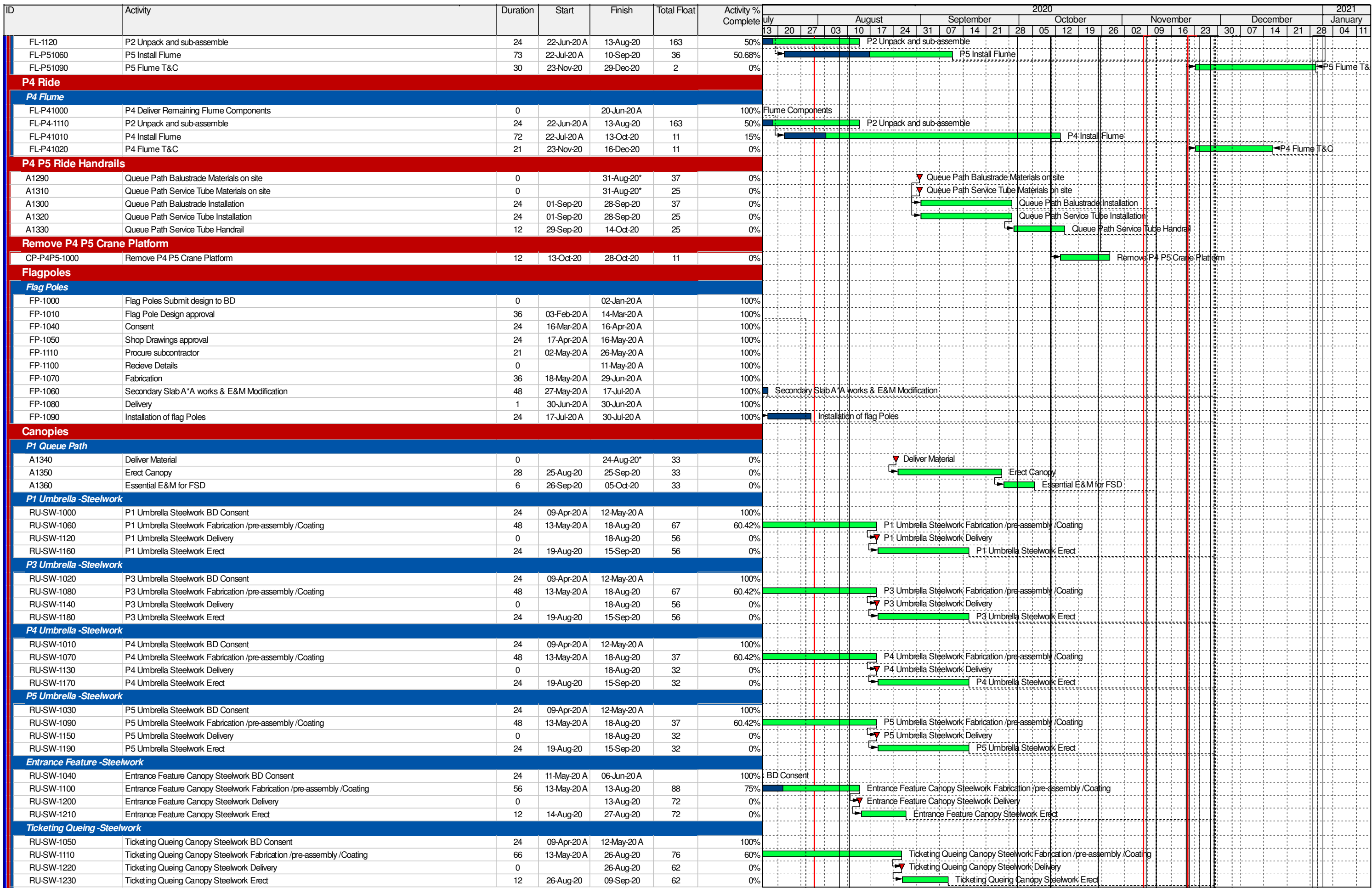
█ critical level of effort ▼ Milestone
 Current █ % Complete
◆ Milestone █ Critical Remaining Work

Project: Ocean Park Water world Project, ID: OP-REM-CP-OPEN-6
 Layout: OP work to comp 20200803
 Page: 2 of 5

Ocean Park TAI SHUE WAN DEVELOPMENT
Contract TSW-C006 Work to Completion affecting FSD OP



Date	Revision	Checked	Approved
05-Aug-20	**DRAFT**		



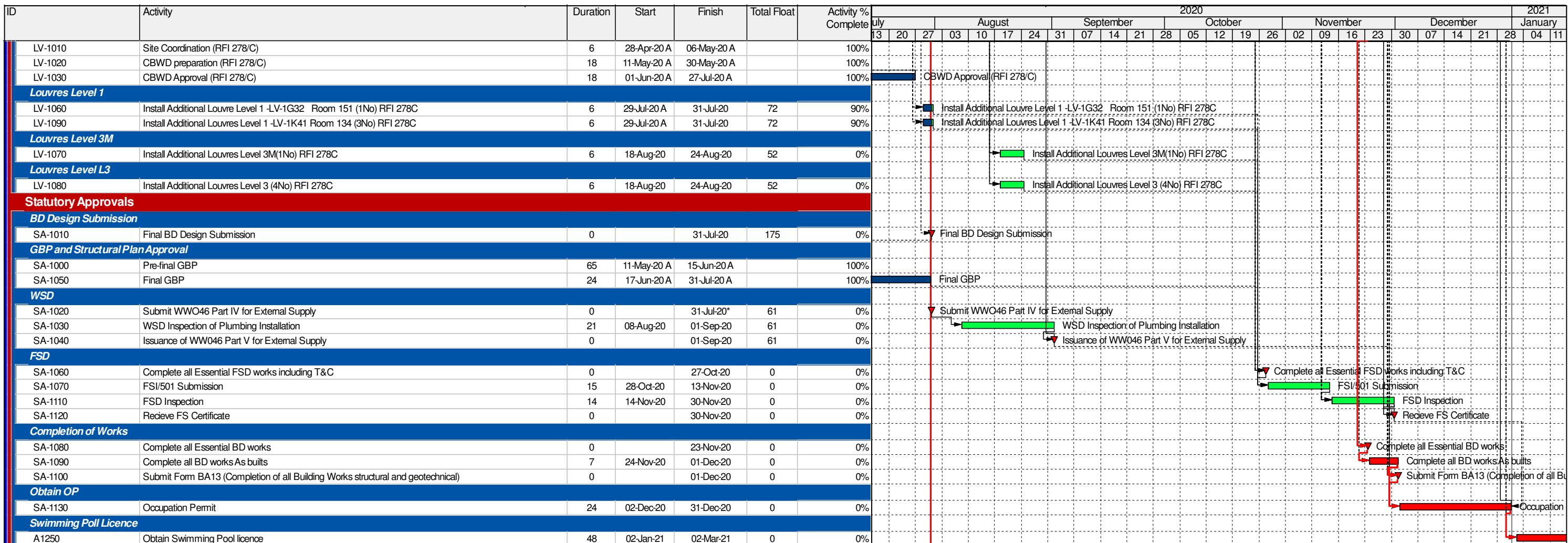
■ critical level of effort ▼ Milestone
 Current ■ % Complete
◆ Milestone ■ Critical Remaining Work

Project: Ocean Park Water world Project, ID: OP-REM-CP-OPEN-6
 Layout: OP work to comp 20200803
 Page: 3 of 5

Ocean Park TAI SHUE WAN DEVELOPMENT
Contract TSW-C006 Work to Completion affecting FSD OP

	Date	Revision	Checked	Approved
	05-Aug-20	**DRAFT**		

Gammon



█ critical level of effort ▼ Milestone
█ Current █ % Complete
◆ Milestone █ Critical Remaining Work

Project: Ocean Park Water world Project, ID: OP-REM-CP-OPEN-6
 Layout: OP work to comp 20200803
 Page: 5 of 5

Ocean Park TAI SHUE WAN DEVELOPMENT
Contract TSW-C006 Work to Completion affecting FSD OP



Date	Revision	Checked	Approved
05-Aug-20	**DRAFT**		